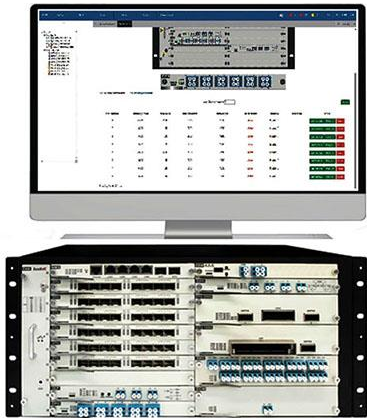


Network Management System Software

Visual Monitoring, Centralized Management and Intelligent Analysis



The NMS600 network management system is a comprehensive management platform for centralized management, visual monitoring, and service configurations of OTN/WDM devices, enhancing efficiency and reducing costs. With a comprehensive logical architecture comprising operational management services, business management services, and basic management services, NMS600 ensures centralized resource management and unified monitoring of equipment health. It is based on the B/S architecture, supporting the unified management of Agiltron entire line of communication network products, and realizing the management, maintenance and testing functions of the entire network system in terms of faults, performance, configuration, security, etc.; and can provide end-to-end management functions according to user requirements.

Features

- Real-time Data Visualization Monitoring
- Support Network Telemetry Reduces Fault Time
- Flexible Configuration with Differentiated Options
- Link Measurement Improves Troubleshooting Efficiency
- Scheduled Backups and Upgrades



- Customer Assistance: installation, configuration, or operation
- Self Help Resources: documentation resources
- Error Correction: assistance via email or other means

Applications

- Agiltron Entire Network Hardwares



Network Management System Software

Visual Monitoring, Centralized Management and Intelligent Analysis



DATASHEET

Secured Log-In

Language English ▼

Username

Password

Login

Unified Management Example (OPD Live Optical Channel Power Monitoring)

The screenshot shows the OPD (Optical Power Detection) monitoring interface. It features a top navigation bar with tabs for System, Node, Device, Alarm, Report, and Measurement. The main area displays a network topology on the left and a detailed view of Slot 12 on the right. Below the topology, there is a table of channel parameters:

Port Number	Gathering Power	Base Value	Jitter threshold	Wavelength	Alarm Status	useable	Test cable	Action
1	-45.00	-2.00	5.00	1550	alarm	Enable <input type="checkbox"/>		Link Fault/Status Modify/Port Remove
2	-45.00	-1.00	3.00	1550	alarm	Enable <input type="checkbox"/>		Link Fault/Status Modify/Port Remove
3	-45.00	-1.00	3.00	1550	alarm	Enable <input type="checkbox"/>		Link Fault/Status Modify/Port Remove
4	-45.00	-1.00	3.00	1550	alarm	Enable <input type="checkbox"/>		Link Fault/Status Modify/Port Remove
5	-45.00	-5.00	3.00	1550	alarm	Enable <input type="checkbox"/>		Link Fault/Status Modify/Port Remove
6	-45.00	-1.00	3.00	1550	alarm	Enable <input type="checkbox"/>		Link Fault/Status Modify/Port Remove
7	-45.00	-1.00	3.00	1550	alarm	Enable <input type="checkbox"/>		Link Fault/Status Modify/Port Remove
8	-45.00	-1.00	3.00	1550	alarm	Enable <input type="checkbox"/>		Link Fault/Status Modify/Port Remove

Unified Management Example (OLP Optical Line Protection with Live Fault Detection)

The screenshot shows the OLP (Optical Line Protection) monitoring interface. It features a top navigation bar with tabs for System, Node, Device, Alarm, Report, and Measurement. The main area displays a network topology on the left and a detailed view of Slot 10 on the right. Below the topology, there is a table of line parameters:

Port	Power(dBm)	Status	Wavelength(nm)	Alarm Threshold	Switch Threshold
RX	-47.58	Abnormal	1550	30.00	---
TX	-47.62	Abnormal	1550	25.00	---
R1	-48.11	Abnormal	1550	---	30.00
T1	-50.00	Abnormal	1550	30.00	---
R2	-46.88	Abnormal	1550	---	---
T2	-48.62	Abnormal	1550	30.00	---

Additional parameters shown include Temperature (29.87), WorkMode (Automatic), Switch Back Delay (10), and Switch Delay (100ms). A pop-up window displays an alarm message: "Waiting for confirmation... Alarm Type: Line alarm, Alarm level: Emergency alarm, Alarm Time: 2025-05-29 14:16:13".

Information contained herein is deemed to be reliable and accurate as of the issue date. We reserve the right to change the design or specifications at any time without notice. Agiltron is a registered trademark of Optowares Corporation in the U.S. and other countries.

Network Management System Software

Visual Monitoring, Centralized Management and Intelligent Analysis



DATASHEET

Ordering Information (Part Number)

	600	1	1	1	1	1
Prefix	Version					
NMS-						